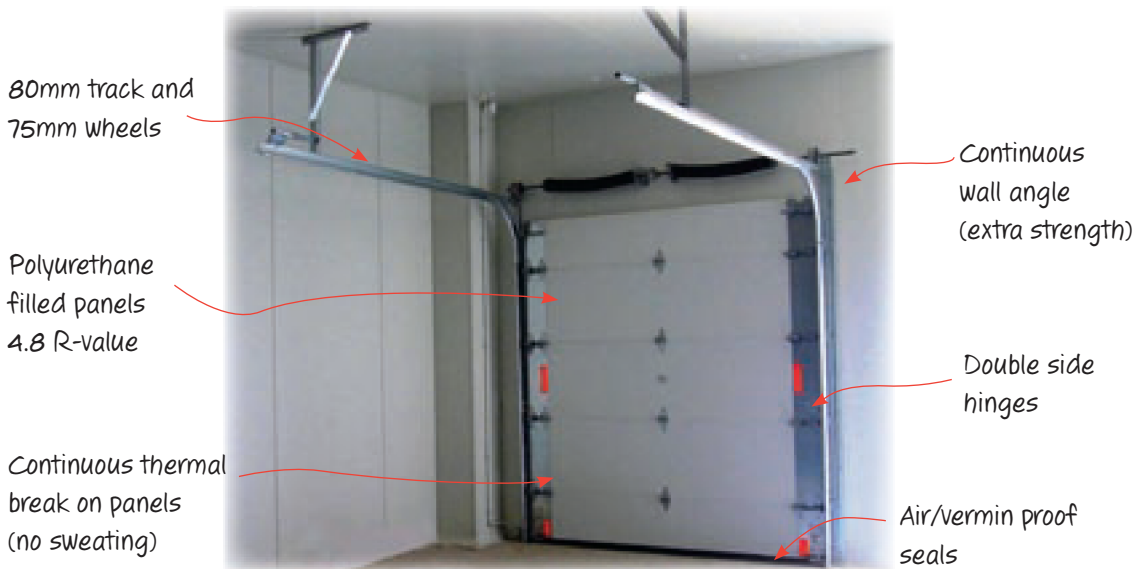




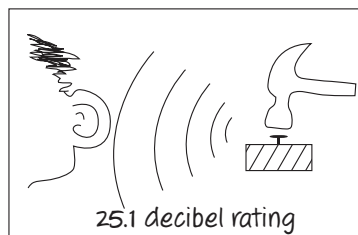
Tru-Therm™ Sectional Doors

Tru-Therm™ Sectional Doors

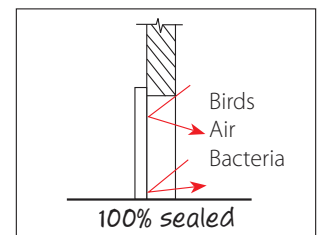
Tru-Therm™ Sectional Doors are the strongest and most reliable insulated sectional door on the market. They are manufactured by Tru-Bilt Industries Ltd and are designed to be a strong but cost-effective insulated door. With a large range of configurations and sizes available, up to **4860mmH x 5600mmW** (wider doors on request), these doors make the ideal choice for many different locations.



Fire Tested

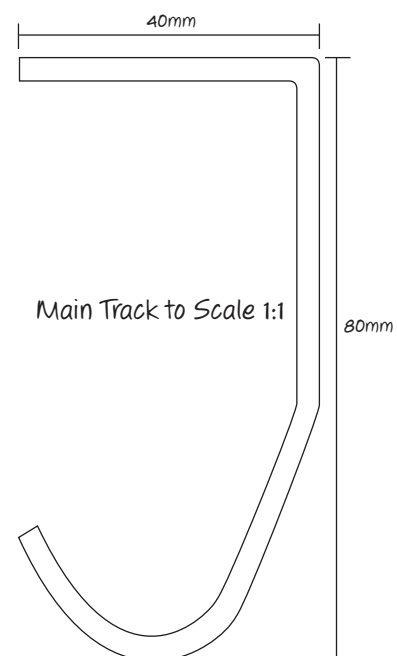
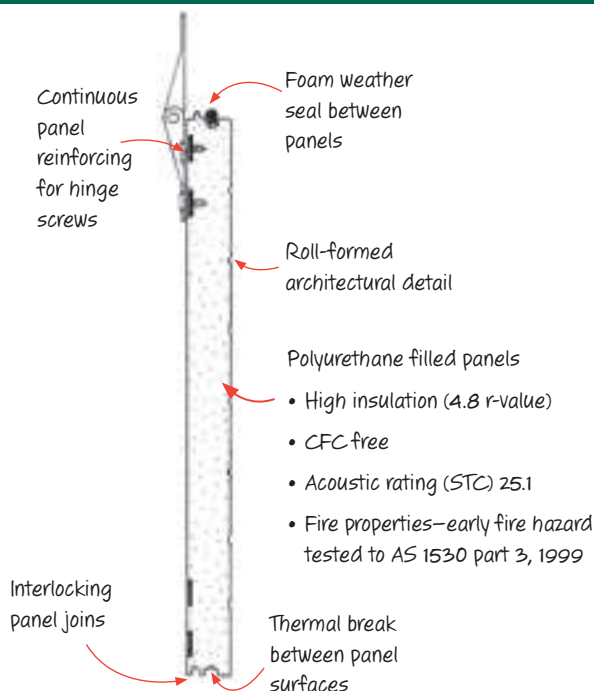


Noise Rated



Totally Sealed

Panel & Track Detail



Multiple Uses



“Truck Access Doors”
(4.86H x 8.0W)

“Fork Lift Access Doors in the Food Industry”



“Emergency Service Glazed Door”
(3.2H x 4.0W)

Multiple Uses



"Distribution Centres - Multiple Bay Doors"
(2.4H x 2.4W)



"High-Lift Fork Truck Door"



Standard Features

Heavy-Duty Door Gear is standard on all Tru-Bilt Industries Ltd Insulated Sectional Doors. All doors have solid torsion tubes and cable drums/spring spigots are die-cast aluminium.



75mm Wheels and Tracks and double side hinges ensure ease of use in the most rugged environments. Tracks and hinges are also galvanised for premium corrosion resistance. This feature makes the Tru-Therm™ door the most heavy duty door on the market.



Vermin-Proof Seals are fitted to all panel joins, around the door opening and across the bottom. This ensures a weather-tight, air-tight and vermin-proof door.



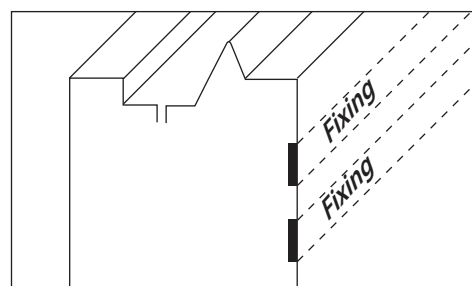
50mm Overlap of door panel onto door opening is standard on all Tru-Therm™ Insulated Sectional Doors. This is important to keep the insulating values up and is often overlooked by others.



Buffer Springs are fitted as standard to all Tru-Therm™ doors. This gives the door a soft stop when opening to give prolonged door life. This also acts as the back stop when using a motor.



Internal Strengthening Bands are hidden behind the back face of all Tru-Therm™ doors. This gives exceptional fixing for the hinges without making the inside face of the door untidy.



Optional Extras

Motor Kits can be fitted to all Tru-Therm™ doors. Motors come with *safety reversing* feature as standard and a heavy duty logic controller. Other features/activations can be added.

Vision panels are a good safety feature also letting in light and to see if trucks are in dock. Double glazing is standard on all windows, saving energy and preventing condensation. Window size = 600mm wide x 150mm high.

Glazed Panels can be added giving excellent light into your building. The glass is laminated with a light tint. There are some limitations on glazing full doors. Consult with your local agent or Tru-Bilt Industries Ltd.

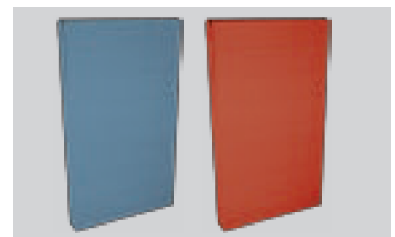
Colours can be added to suit your project. The door comes in white as standard and can have a heavy duty industrial two pac paint finish added.

Yellow Bottom Panel can create an excellent safety feature and also help prevent damage by fork trucks.

Hand Chains are recommended on all doors over 2.4m high unless motor fitted. This gives you excellent door control and can prolong the life of our door.

Broken Cable safety devices can be fitted to stop your door "dead" in its tracks if one of your cables were to break. This is an excellent O.H.S. feature. The red line indicates the wire rope. When the wire rope breaks the arm swings over backwards clamping the door in place.

Heavy Duty Wheels can be added to your door for corrosive or heavy duty doors. Nylon wheel, sealed bearings and stainless steel shaft. Tested to 150,000 cycles.



Technical Data

Product Title:

Tru-Therm Sectional Door

Maximum Size:

4860mm H x 5600mm W

Power Supply Required:

1PH, 230V (Motor option only)

Standard Lift:

Sideroom—200mm Headroom—450mm

High Lift:

Sideroom—200mm Headroom—1700mm

Vertical Lift:

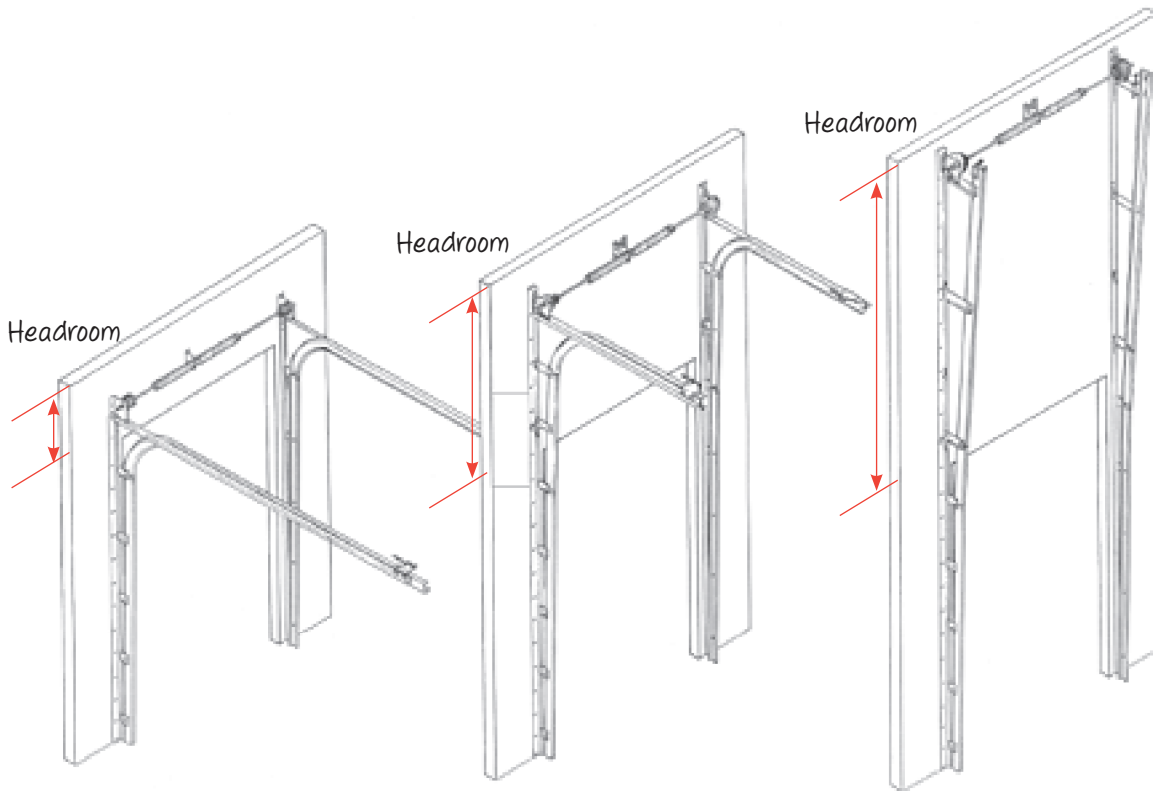
Sideroom—200mm Headroom—Door Height x 2 + 200mm

Motor:

Sideroom—400mm—on motor side only

Guarantee:

Guaranteed against defects in workmanship and materials for (1) year from date of sale.

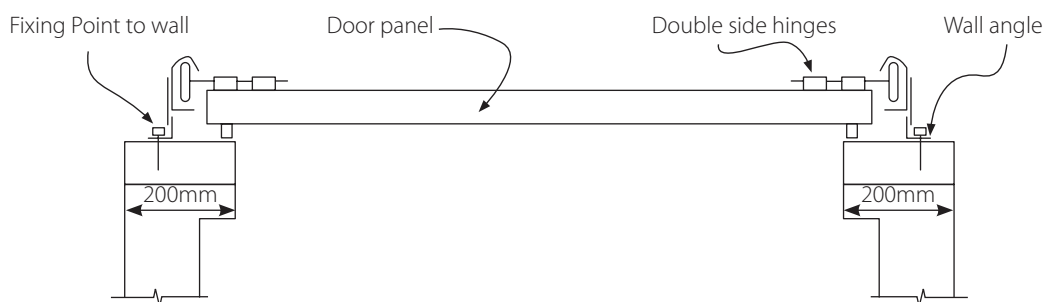


Standard Lift

High Lift
(vertical tracks go up 1400mm before coming back)

Vertical Lift

Plan View



Product Specifications

Tru-Therm™ Sectional Door

Operation: The doors are operated manually or electrically. Manual doors up to 2.4m high can be hand operated. Doors over 2.4m must be fitted with a hand chain unit or motor. Electric doors have a jack-shaft motor at the front mounted on the left or right hand side, which comes with an **auto-engaging emergency over-ride**. Standard up/down controls are supplied with the single-phase motor. Graduated hinges make the door seal tight with the opening.

Finish: Colour as standard is white. A two-pac paint finish can be added on application to the outside. Gloss finish.

Hardware: 15" (381mm) radius, galvanised industrial hardware is used with all bracket hinges and track. All doors to have double hinges on the outside with extended axle wheels. The top bracket is adjustable to suit the radius of the door. The bottom bracket has a fixture pin for counter-weight attachment. Tracks to be 80mm, wide formed with 2.7mm thick steel. All tracks to have 50mm angle. spot welded on for extra support.

Torsion bar: Made out of 25mm solid steel bar with keyway the full length. These are supported by bearing brackets at each end with centre brackets for additional support on doors over 2m wide. Coupling in the middle is supplied with each bar for fine adjustment.

Cable drums: Cable drums are made from die-cast aluminium designed to suit the weight of the door. Key-wayed with locking bolts. Aluminium to be of highest quality.

Vision panel: Double-glazed vision panels if specified are to be fitted inside plastic injection moulded frame. Silicon bead to frame to stop moisture.

Lifting wire: All doors to have galvanised wire with a safety factor of 6:1. Wire is of industrial quality.

Locking: Manual doors have an internal slide arm which locks into the track on one side. There is provision for a padlock.

Springs: The springs on sectional doors are made from heavy-duty heat treated material with die-cast aluminium ends.

Panels: Made from roll formed steel and filled with a CFC Free polyurethane insulation. Thermal breaks are standard. The bottom panel has an aluminium strip with rubber weather seal. The sides and top of each door feature a u-gasket with an aluminium retainer. Panelling on sectional doors is 48mm thick. A two pac paint finish is available for the outside upon request. Gloss finish.

Safety option: Beam and touch sensors can be installed to automatically open the door should it inadvertently be closing on a machine or person. Motor kits have overload protection and reversing safety features. Bottom panels can be painted "Safety Yellow" for visibility.