

# Tru-Level TL2200 & TL2800

## Hydraulic Dock Leveller

### INSTALLATION & OWNERS MANUAL



PACKED BY:	DATE: / /
INSTALLED BY:	DATE: / /

*(Please leave with owners when finished)*

**TBi** **TRU-BILT**  
**INDUSTRIES**  
THE DOCK AND DOOR COMPANY THAT CARES

# PACKING LIST

<b>Item</b>	<b>Qty</b>	<b>Check</b>
Toe Guards	1	<input type="checkbox"/>
Bumpers	2	<input type="checkbox"/>
Control Switch	1	<input type="checkbox"/>
Safety Pole (Yellow)	1	<input type="checkbox"/>
Installation Instructions	1	<input type="checkbox"/>

# CONTENTS

Safety Warnings.....	3
Installation Instructions.....	4–9
Wiring Instructions .....	9
Operating Instructions.....	10
Warranty .....	10
Maintenance.....	11
Trouble Shooting.....	11

# PREFACE

- The installation of Tru-Level is reasonably basic if you follow the fitting instructions carefully.
- A selection of basic hand, power tools and a welder will be required depending on the type of fixing available.
- A forklift or Hiab will be needed to lift the leveller.

# SAFETY WARNING



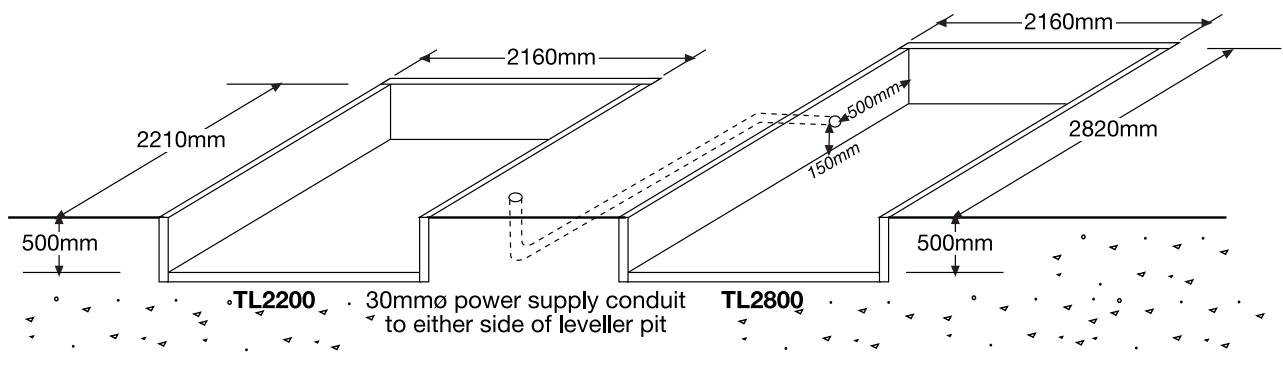
- All necessary safety precautions must be carried out to ensure a safe working environment for yourself and those around you.
- Precautions must be taken to prevent people from being injured from falling objects.
- All electrical work must be carried out by a fully qualified electrician.
- Keep out from under the leveller
- Take extreme care when working under dock levellers.

**WARNING:** *Failure to follow precautions in this manual may result in severe personal injury or death.*

# ONE

Check that the pit is square and true before installing. Also make sure the conduit is in place and has nothing blocking it.

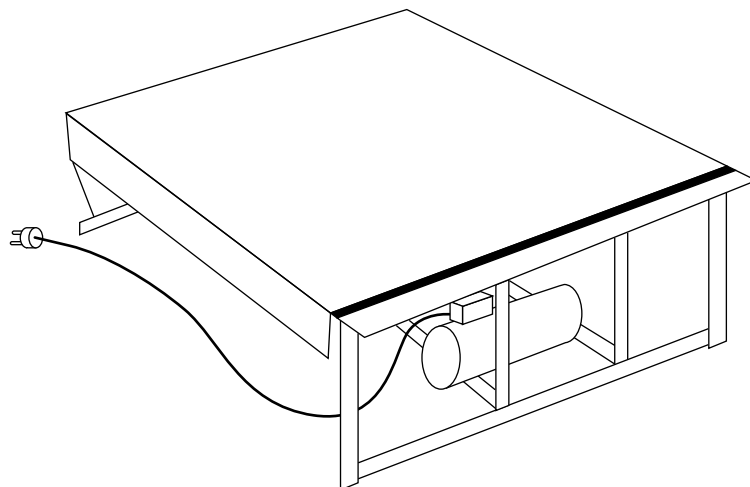
## Pit Details



Power Supply required: 230 volt, 1 phase, 10 amp

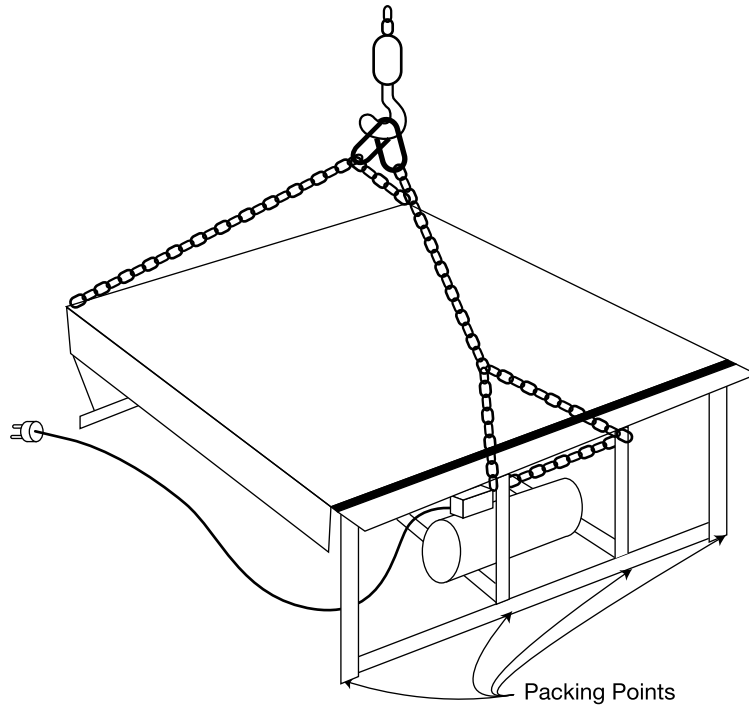
# TWO

Wire in extension lead (by electrician) to the motor and bring the end around to the front of the leveller.



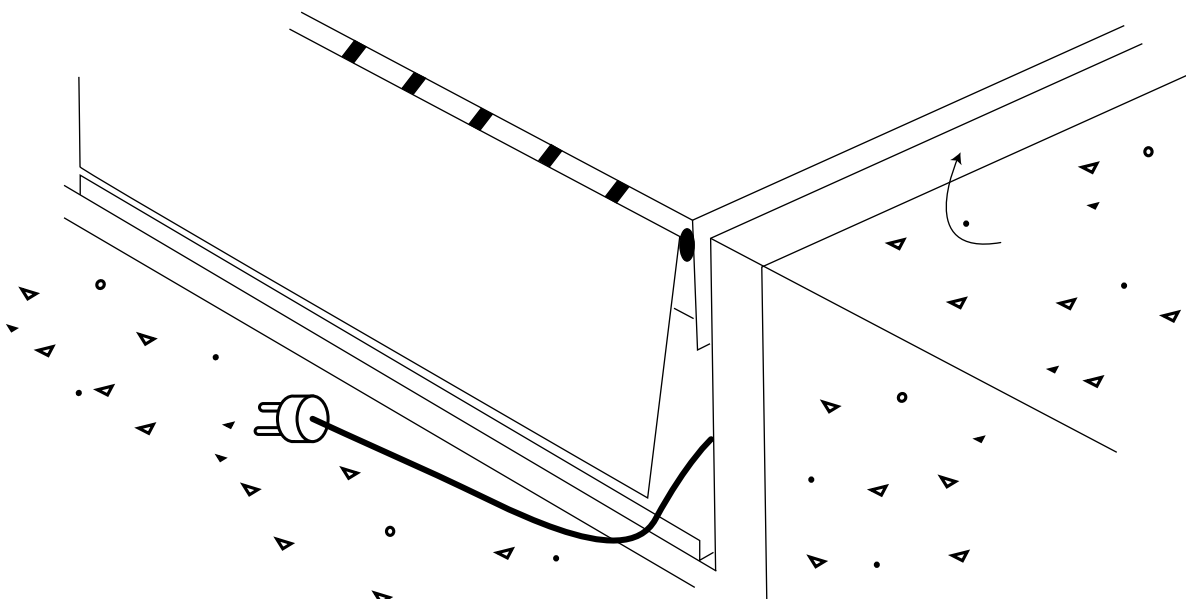
# THREE

Lift and place leveller in the pit. Keep the lead coming out of the front and be careful not to damage.  
Pack the back and front so the leveller sits flush with the pit.



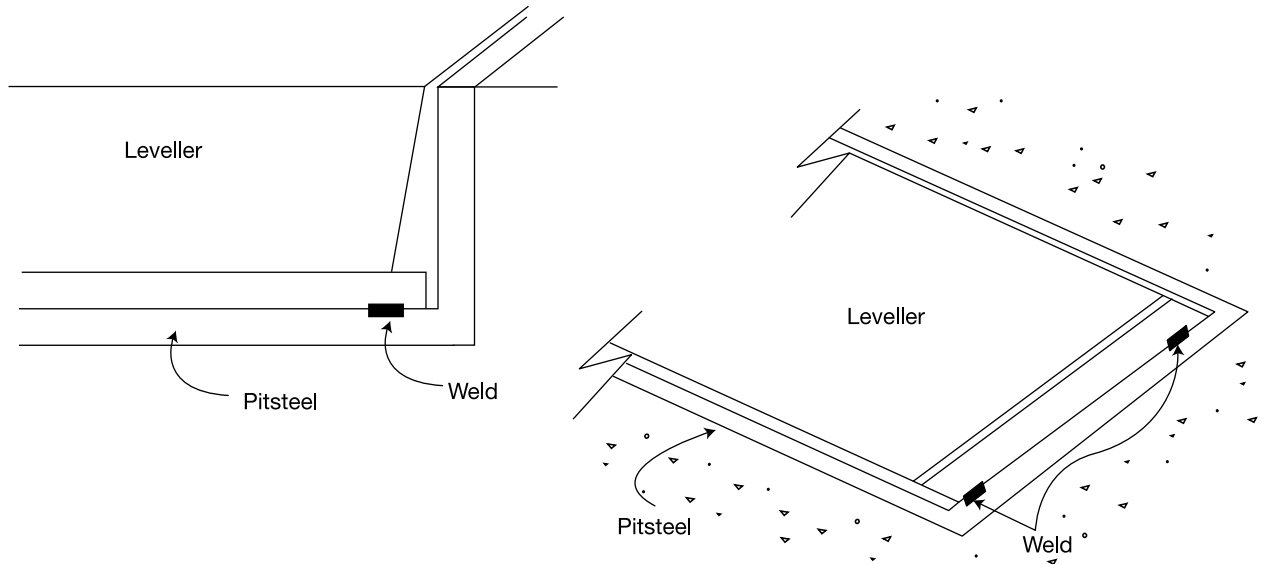
# FOUR

Place the leveller 300mm from the back of the pit, and then push it back into the back of the pit once the chains have been taken off.



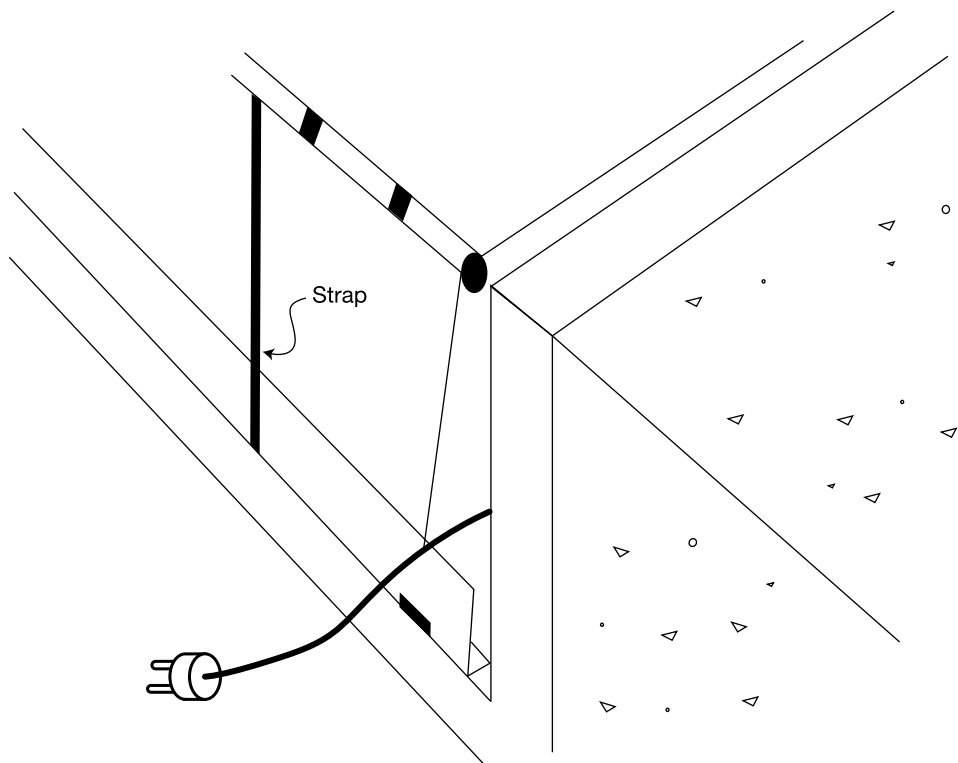
# FIVE

Stitch weld in two places across the back and front, once the leveller has been centred up and pack flush at the back and front.



# SIX

Cut the front straps and plug in the leveller.



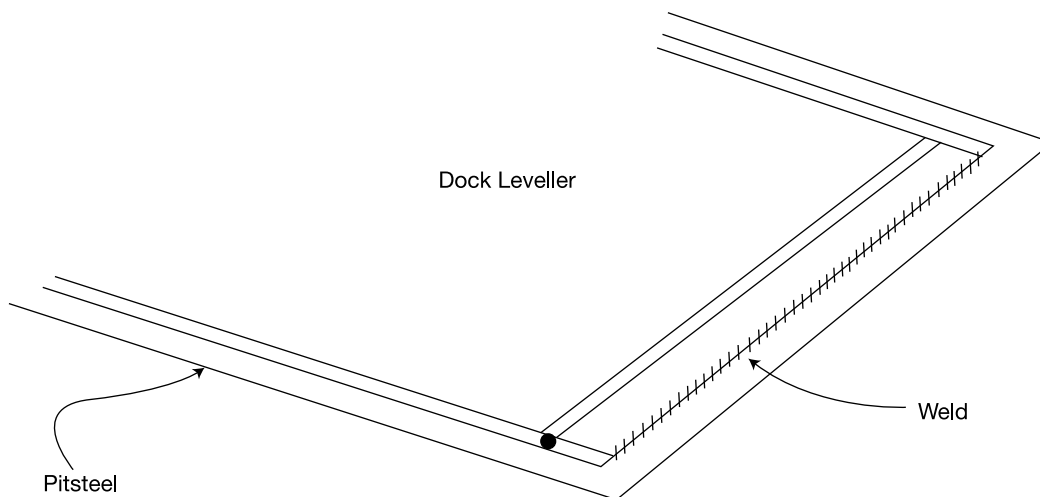
# SEVEN

## Checking Operation

1. Clean area around leveller and barricade off area to keep all people well clear of the leveller.
2. Turn power on. This will activate the leveller and power up the main ram. When the main ram reaches the end of its travel the front lip will automatically extend out. Keep well clear of front lip and main platform. Make sure toe guards are working correctly.
3. Turn power off (or pull out plug) and let the leveller go down. The main deck will descend to the below dock position and the lip will also start dropping.
4. Turn power on (or plug in) and this will power up the main ram. The front lip will pull back in and go to the parked position.
5. Check cycle more than once.

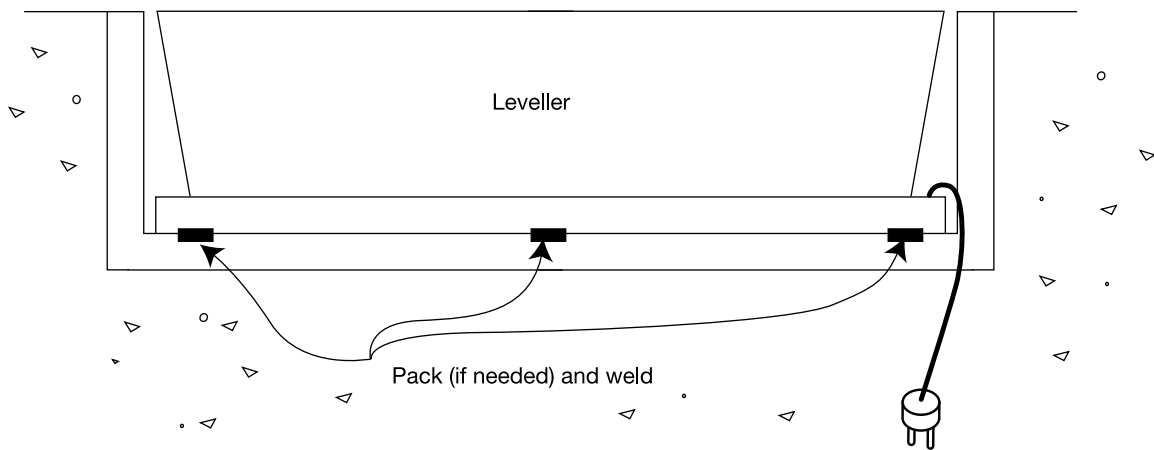
# EIGHT

On completing step seven and the leveller is working well, weld completely across the back. **This is very important.**



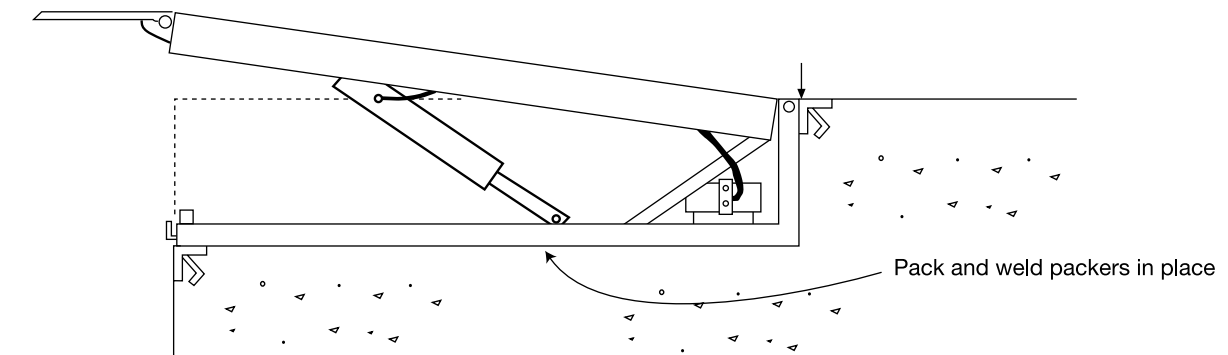
# NINE

Weld the front in a minimum of three places. 150mm (6 inch) welds minimum.



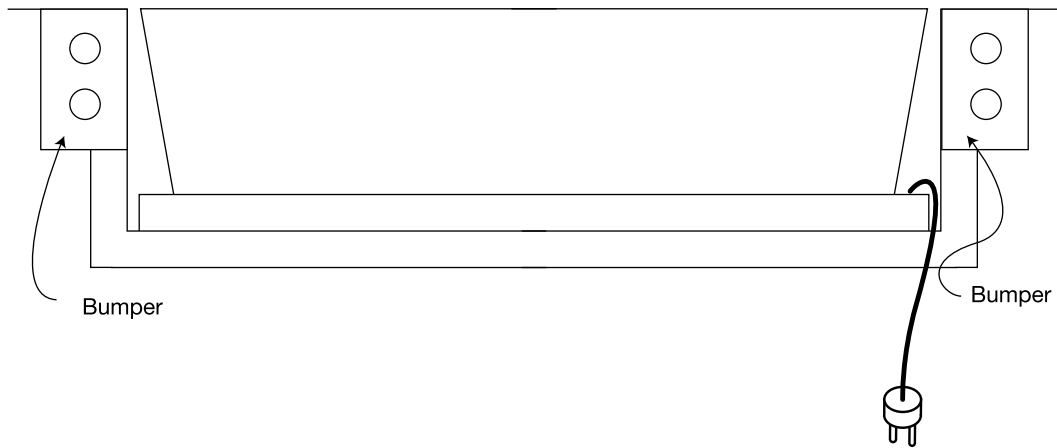
# TEN

1. Power up the leveller and install the safety stand. **Take extreme care!** The stand fits over a piece of steel in the base of the leveller and into a piece of pipe under the lip. Take extreme caution when working under dock levellers.
2. Place packers and weld under main ram if necessary. Ram weight **must** be transferred into the concrete.



# ELEVEN

Install the rubber bumpers supplied. Bolt on as in the picture below.



# TWELVE

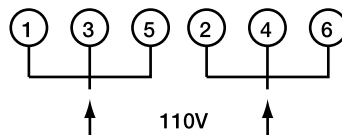
Your Tru-Level should now be complete and several trial runs may be needed to ensure everything is functioning correctly.

# WIRING INSTRUCTIONS

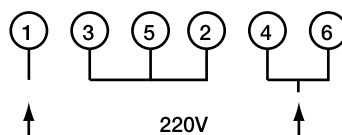
Electrician can now complete wiring.

**WARNING!** The electrical connection must be left entirely to a fully qualified electrician.

The unit can be wired for two different power supplies. Wire to suit supply.



Install push button in an area where you can see the leveller.



# OPERATING INSTRUCTIONS

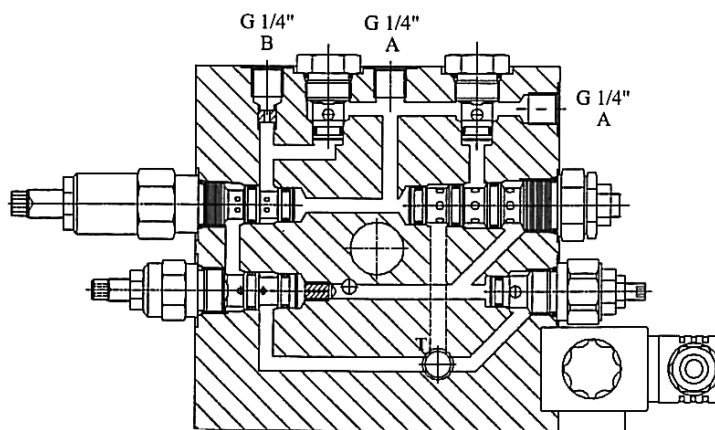
**The leveller is not a lifting platform.** Make sure that the truck or container is backed in correctly.

1. Push the button and hold until the ramp is right up, with the lip extended. Release the button and the ramp will settle down into the truck. The ramp can now be used.
2. Once the ramp has been finished with, push the button. The main ramp will lift up pulling the front lip in. Once the lip is in release the button and the ramp will go back to the parked position. Check that the front lip is seated in.

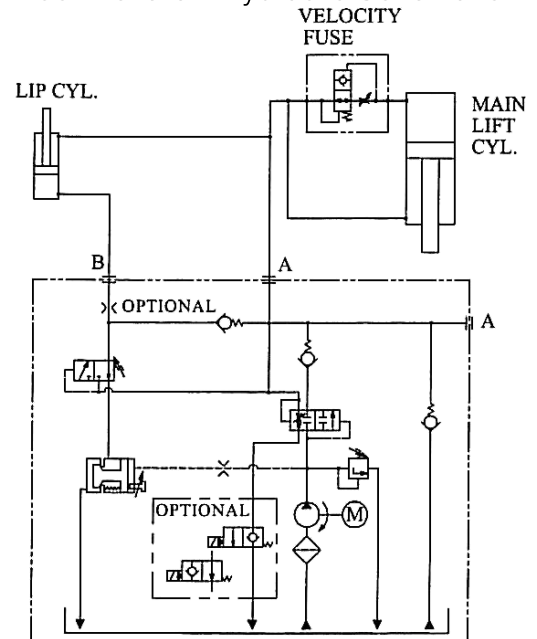
# HYDRAULIC DETAILS

The unit holds 5L of standard VG46 oil. The unit is factory set and tested. Do not change or adjust the valves and their settings.

“Dock Leveller” Hydraulic Valves Diagram



“Dock Leveller” Hydraulic Schematic



# WARRANTY

Tru-Bilt Industries warrants that this Tru-Level will be free from defects in material and workmanship under normal use for a period of one year from the date of installation, provided the purchaser **maintains and operates** the Tru-Level in accordance with the owners manual.

This warranty does not cover any failure or damage caused by improper use or abuse. Contact your supplier/installer for warranty details.

# GENERAL MAINTENANCE

Your Tru-Level dock leveller has been designed for heavy-duty use with a minimum of maintenance needed.

However, it can be damaged if used carelessly so we recommend that you inspect your Tru-Level every 3 months for damage. If repair is needed, it is important to get it done as soon as possible. If left, it will only cost your company more in the long run.

Should a problem arise, refer to the “Trouble Shooting” section and call a technician. **Do not try fixing yourself.**

**WARNING:** *Take extreme care when working under dock levellers. They can kill or injure.*

# TROUBLE SHOOTING

PROBLEM	CORRECTION
<b>Dock leveller not working at all</b>	Check electrical supply and check there is no hydraulic oil leaking from the front. Call appropriate person.
<b>Front lip not extending</b>	Grease front hinge point and check ram is working.
<b>Oil leaking</b>	Call a hydraulic technician. The unit takes 5L of VG46 oil. Be careful when working under dock levellers.

**WARNING:** *All electrical repairs should be carried out by a fully qualified electrician. All hydraulic repairs should be carried out by a fully qualified person.*

**AREA AGENT**

**TRU-BILT INDUSTRIES LTD**  
586 Kaikorai Valley Road, Dunedin, New Zealand  
Phone: +64 3 488 2060, Fax: +64 3 488 2061