

Tru-Level™ Dock Levellers

Tru-Level™ Hydraulic Dock Leveller

Today selecting the right dock leveller for your facility can be more complicated than ever. New models are being introduced, truck designs are changing, productivity is critical and safety is becoming an even bigger issue at loading docks across the country.

At Tru-Bilt Industries Ltd we believe each of these points are important when choosing your leveller. With today's increasing demands for safety, durability and ease of use, it is our mission to supply your company with the right product for your individual requirements.

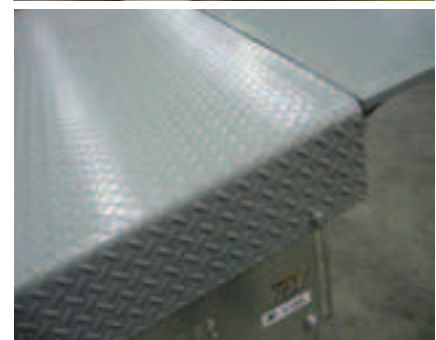


Safety is one of the most important considerations when choosing a dock leveller. Full range toe guards, free fall protection and a strong reliable maintenance strut are standard safety features on all hydraulic levellers supplied by Tru-Bilt Industries Ltd.

Durability and **Reliability** are large factors in the overall lifetime ownership cost of your leveller. Hydraulic levellers, from Tru-Bilt Industries Ltd are built significantly stronger and have less maintenance requirements, when compared with other brands.

Easy operation is vital for optimum productivity. Fully automatic, push button operation ensures your dock leveller is effortless for your dock attendants to use. Ease of pit clean out is also an important consideration.

Smooth transition from the dock leveller to the truck, helps prevent injuries and minimize fork lift damage.



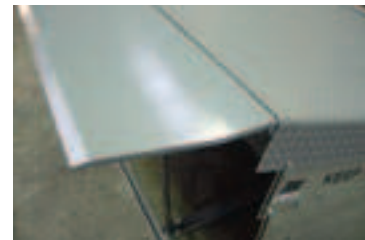
Standard Features

Hydraulic system positioning of both platform and lip ensures high reliability and low maintenance. Fully automatic pushbutton operation ensures your dock leveller is effortless for your dock attendants to use.

Toe guards are a standard safety feature on all hydraulic levellers from Tru-Bilt Industries Ltd. The guards prevent feet from being caught under the platform and also help stop rubbish from falling into the pit.

Floating platforms on levellers supplied by Tru-Bilt Industries Ltd ensure the lip is always in positive contact with the truck. This is very important as trucks move up and down a lot during loading and unloading.

Rubber bumpers are supplied with all dock levellers from Tru-Bilt Industries Ltd. Rubber bumpers prevent damage to your concrete and also stop trucks from hitting your building.



Optional Extras

Vermin seals. (Shown in red) These seals prevent vermin and other pests from entering your building. Vermin seals can also help reduce your annual energy costs by stopping air penetration. (Fixed to pit).

Extra long levellers are an ideal option when a bigger difference in dock to truck height is encountered. The extra length means the platform angle is greatly reduced.

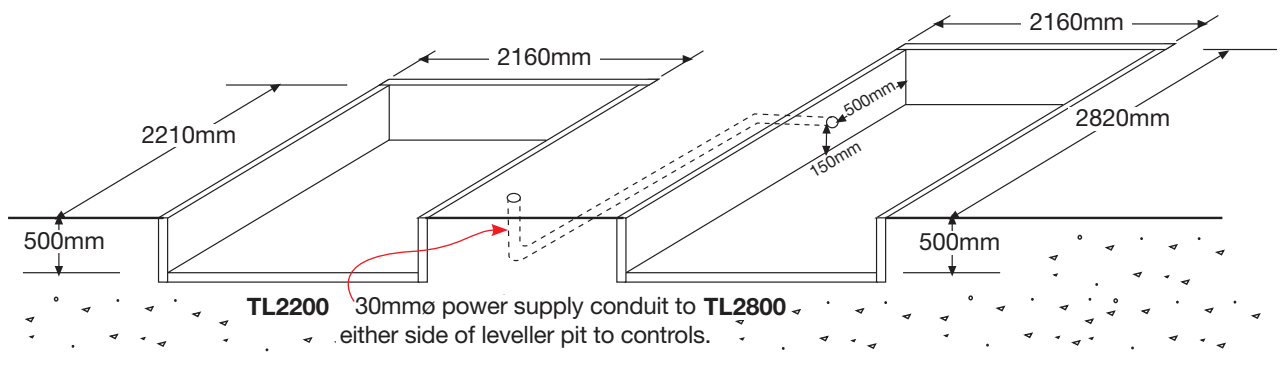
Dock frames are an economical option when installing levellers onto existing loading docks. The frame is bolted in front of your existing dock eliminating the need to cut into the concrete floor. Insulated walls and roof can also be fitted to create environmental loading area. (See page 60)



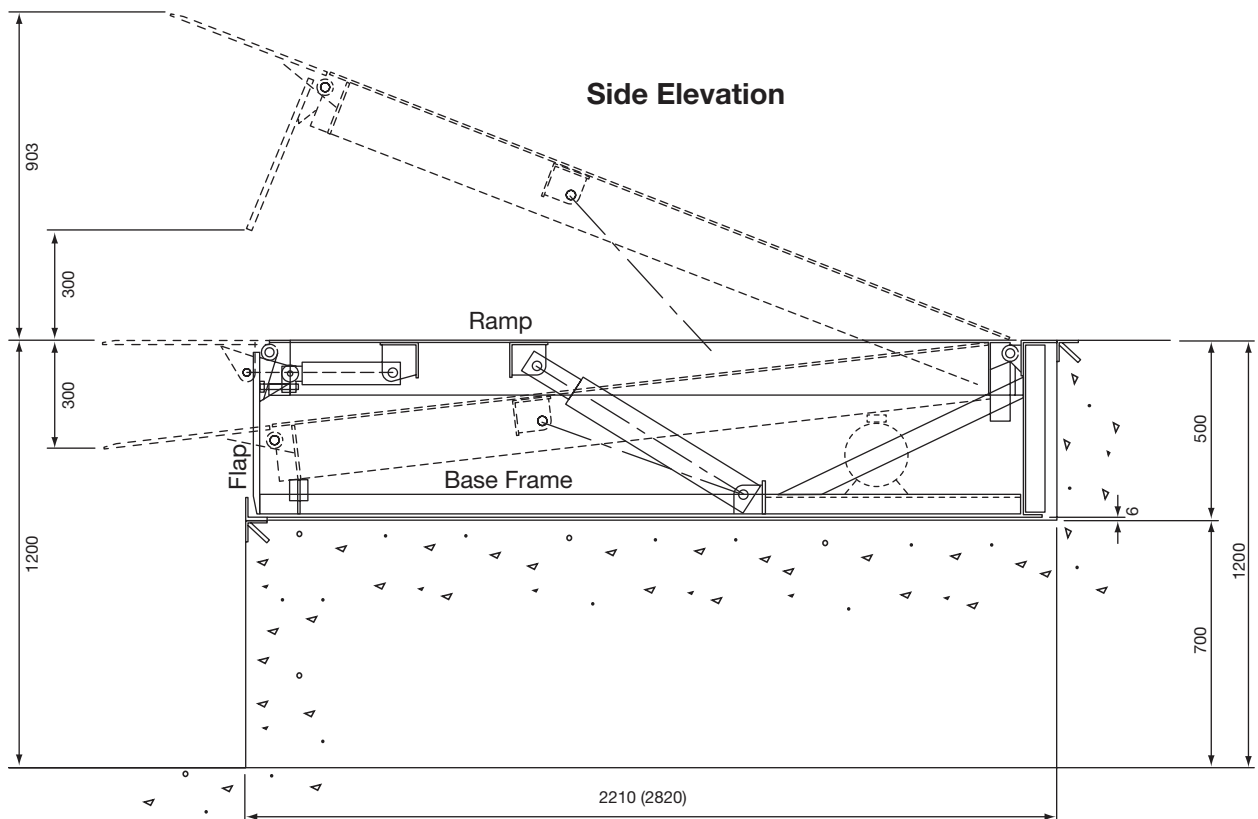
Technical Data

Product Title:	Tru-Level™ Dock Leveller (+ Code #)
Pit Size:	TL2200 —2210mmL x 2160mmW x 500mmD TL2800 —2820mmL x 2160mmW x 500mmD
Operating Range:	300mm above loading dock 300mm below loading dock
Leveller capacity:	13000kg (when bridged)
Power supply req:	230 volt, 1 phase, 10 amp
Guarantee:	Guaranteed against defects in workmanship and materials for (1) year from date of sale.

Pit Details



Side Elevation



Dock Frames

Dock frames eliminate the need to cut into your existing floor in the case of installing a dock leveller. Simply sit the frame in front of your dock and bolt it in place. The front legs adjust to the height/slope of your concrete making placement and installation a breeze.



Stand alone docks with no shelter are an easy solution to your docking issues. Personnel frames (see page 30) can be bolted on for side protection.



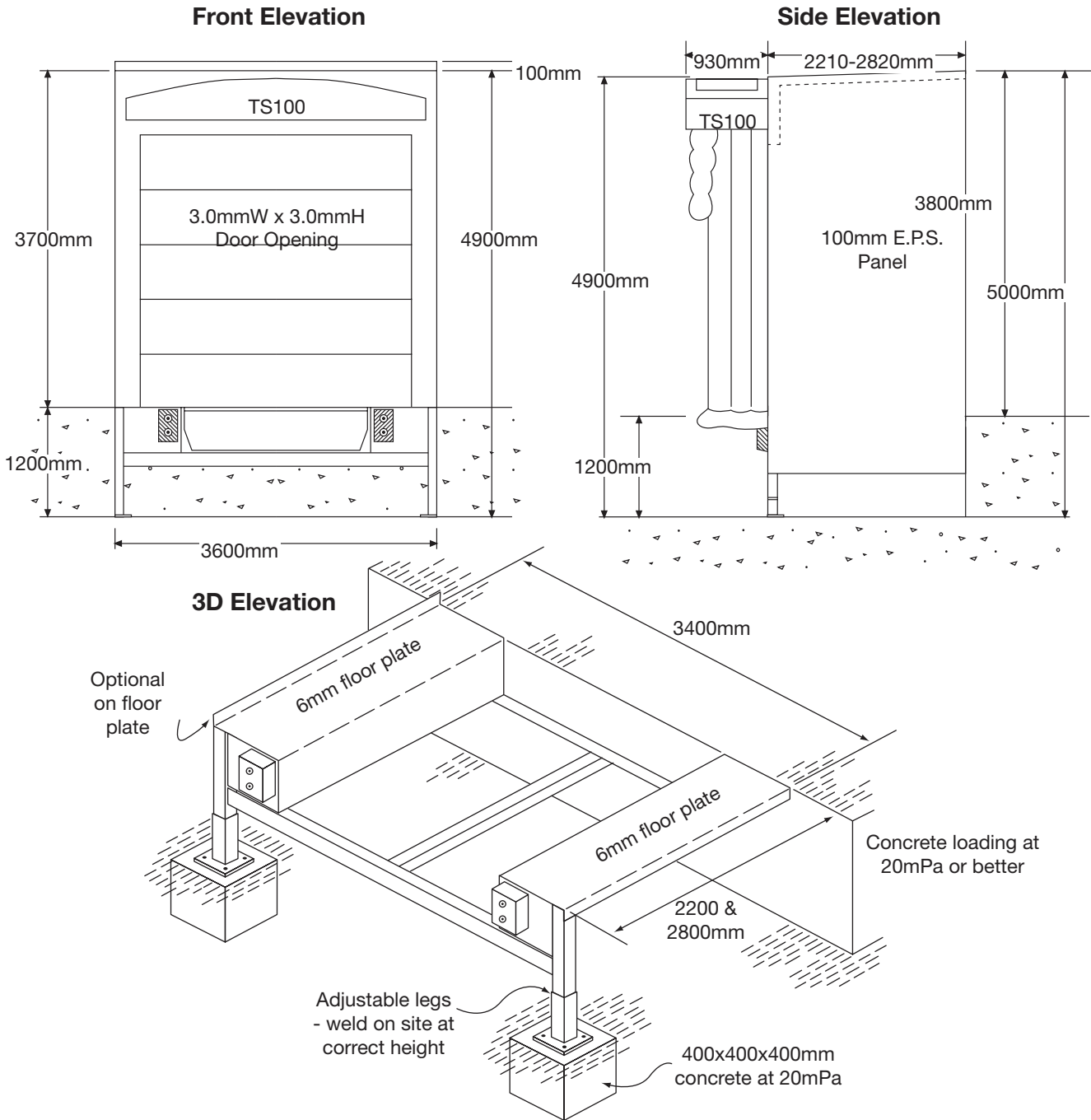
Cool store panel on the side of the shelters can be extended to cover the side of the dock frame. This gives your building a tidier appearance.



Technical Data

Dock Frames

Please Note: These drawings are an indication only



Product Specifications

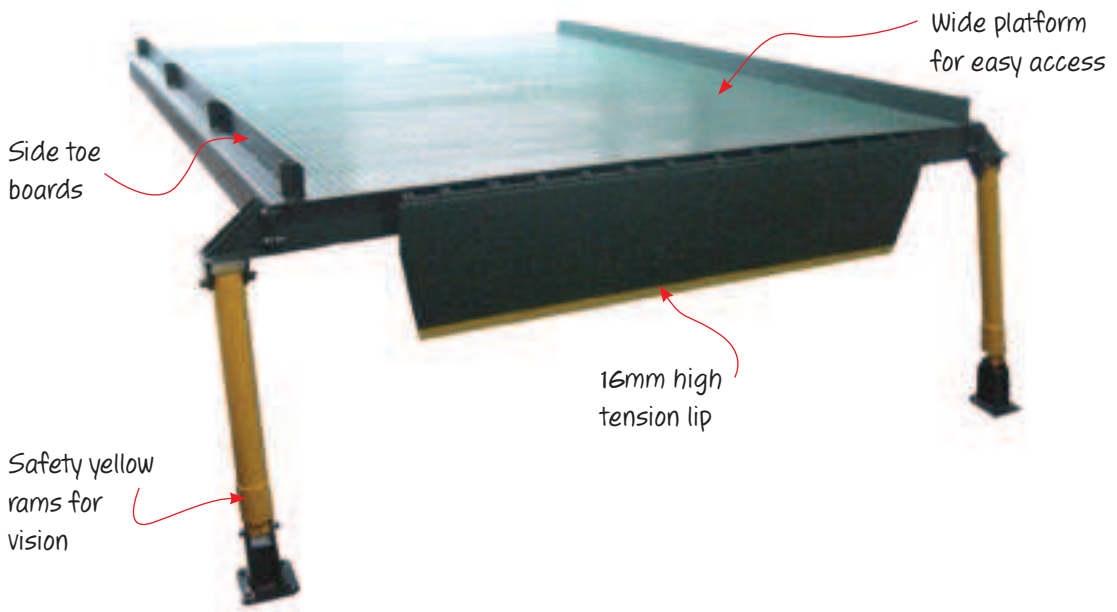
Tru-Bilt Dock Frame

Construction: All steel work to be made to suit TL2200 or TL2800 Dock Levellers. Deck on either side to be 6mm thick floor plate. Front legs to be adjustable and welded to suit on-site. Frame to be able to have shelter and dock seal attached.

Finish: To be hot dip galvanised and bolts to all be galvanised to prevent rust.

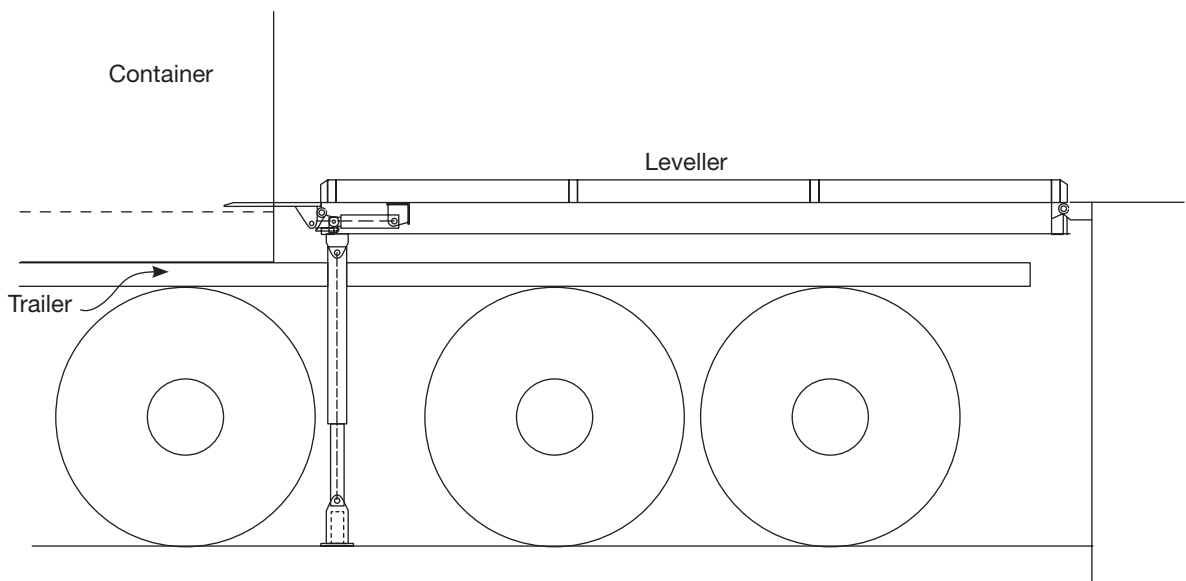
Tru-Level™ Container Dock

With the huge CD3600, unloading 20ft containers that are sitting forward on a trailer are a breeze. The wide leveller allows the trailer to go between the rams and have the lip come down in the container. The power pack sits back under the dock out of the way of harm.



The diagram below shows a simple installation with the leveller bridging across into the container.

Operation Diagram



Technical Data

Product Title: Tru-Level™ Dock Leveller (CD3600)

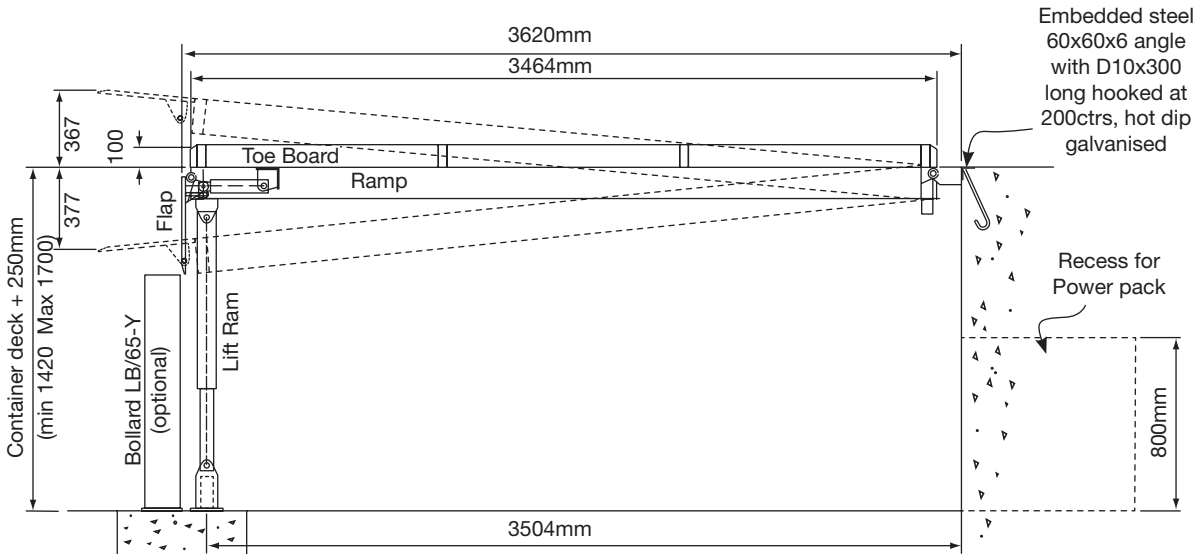
Operating Range: 300mm above loading dock
300mm below loading dock

Leveller capacity: 13000kg (when bridged)

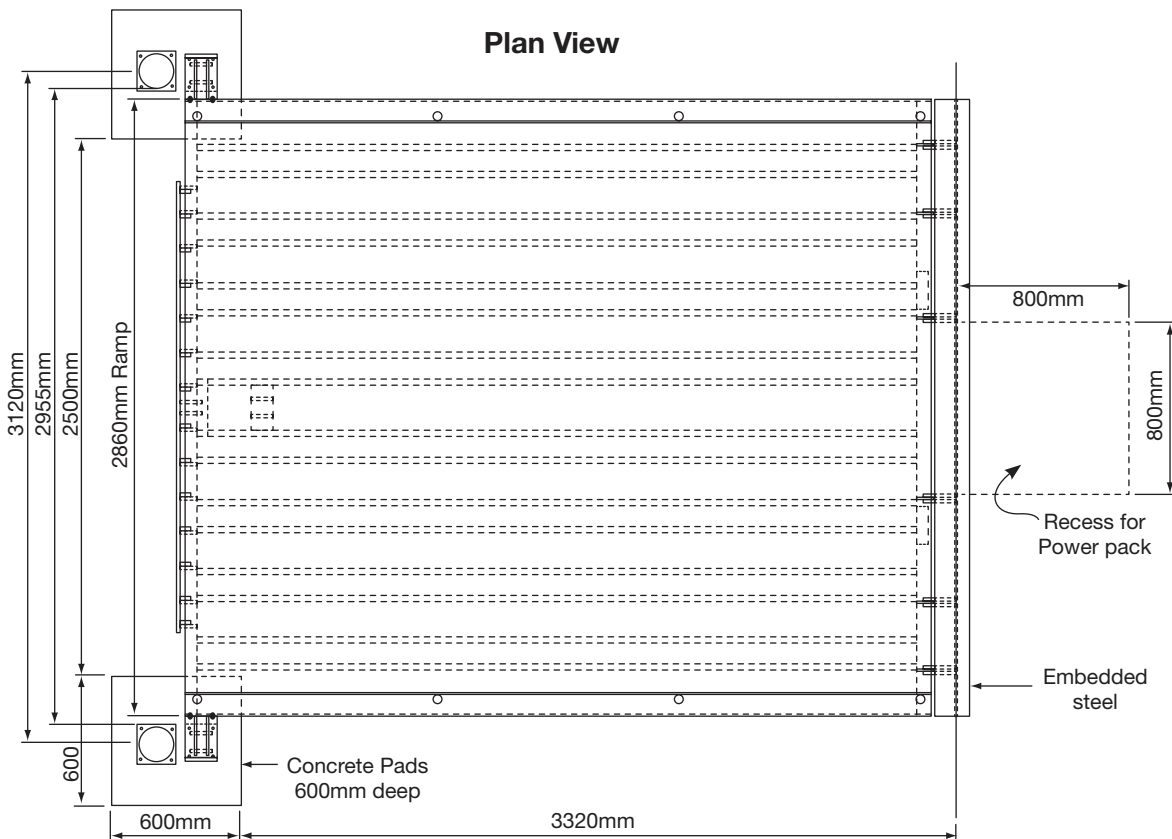
Power supply req: 230 volt, 1 phase, 10 amp

Guarantee: Guaranteed against defects in workmanship and materials for (1) year from date of sale.

Side View



Plan View




Loading Dock Bumpers

Save your dock loading bay by installing bumpers to combat damage by trucks. Trucks can cause a huge amount of damage to the concrete creating a costly repair job. Use the mighty DB10 steel faced bumper for the ultimate protection or a row of DB12 bumpers right across your dock. Say goodbye to concrete damage and split timber today.

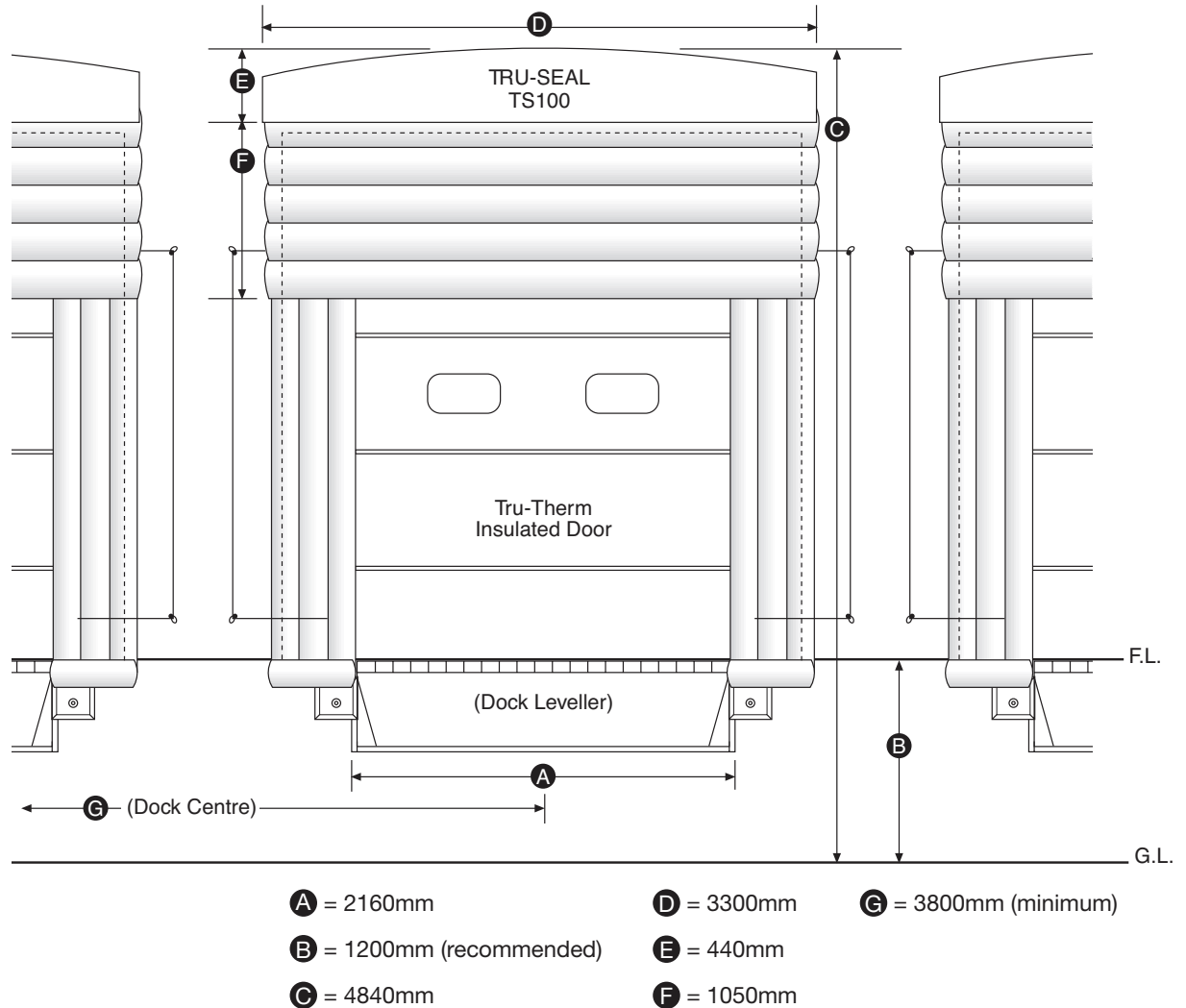


DB10

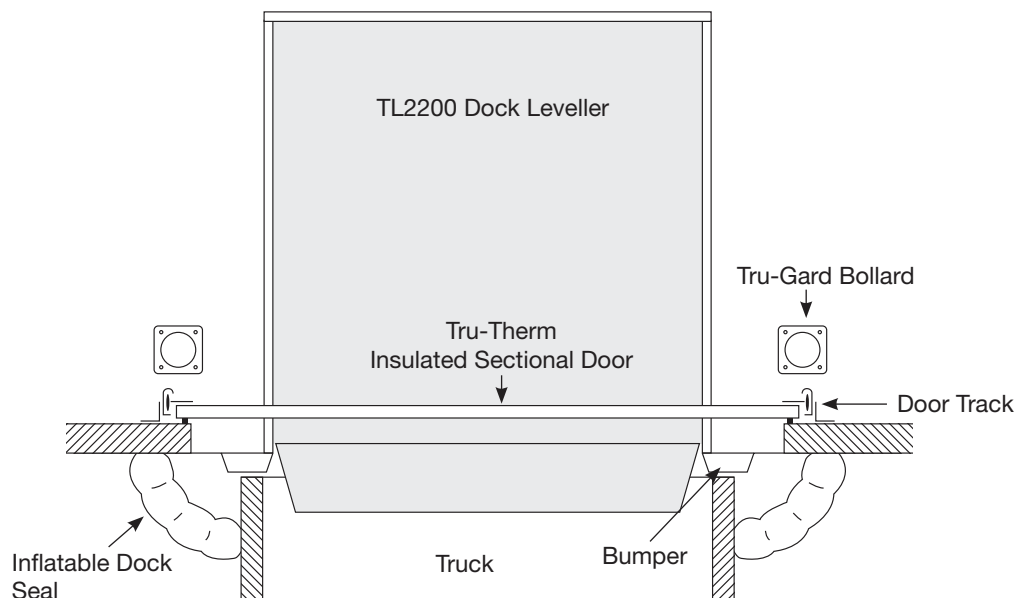
Code	Description	
DB10	Steel Face—Heavy duty, steel faced bumper 300mm high x 300mm wide 100mm thick	
DB11	Laminated Bumper—255mm high x 305mm wide 115mm thick	
DB12	Laminated Bumper—255mm high x 610mm wide 115mm thick	
DB13	Rubber Bumper—Reinforced, moulded rubber 325mm high x 250mm wide 100mm thick	

Loading Dock Design

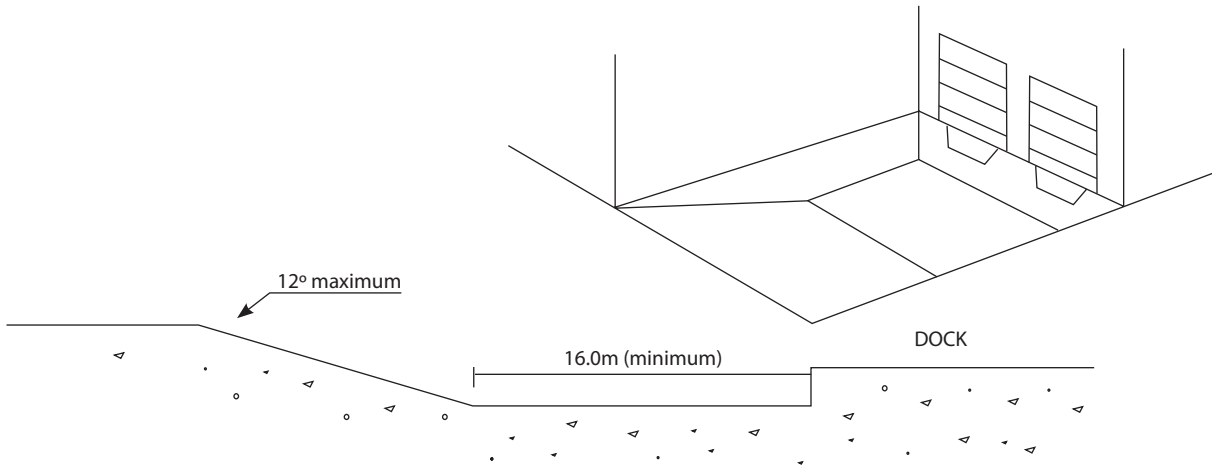
Loading dock design will either make or break your new loading/unloading area. Cold chains are broken or kept or the efficiency will rise or lower. Set out on the following two pages is some excellent advice on dock design that has been compiled to help you make your dock area the most user friendly in the country. **Tru-Bilt Industries Ltd also offers an in-house design service.**



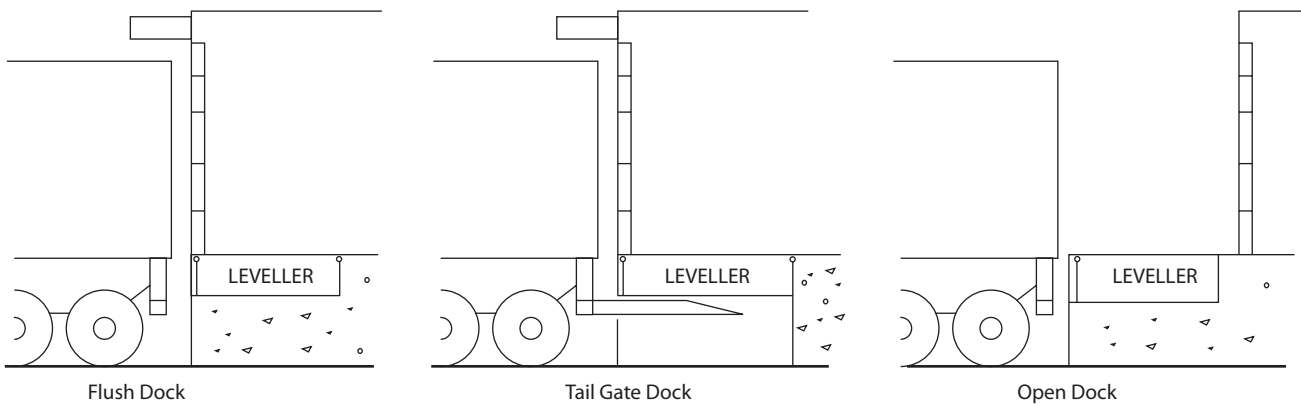
Plan View



Recessed Dock

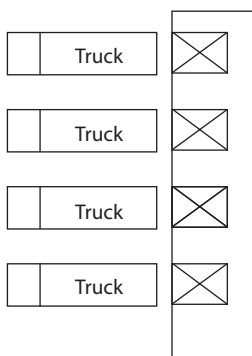


Dock Options

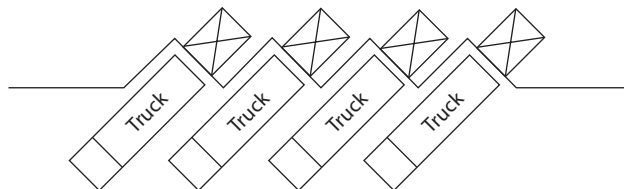


Dock Layout

STANDARD DOCK



SAWTOOTH DOCK



FINGER DOCK

